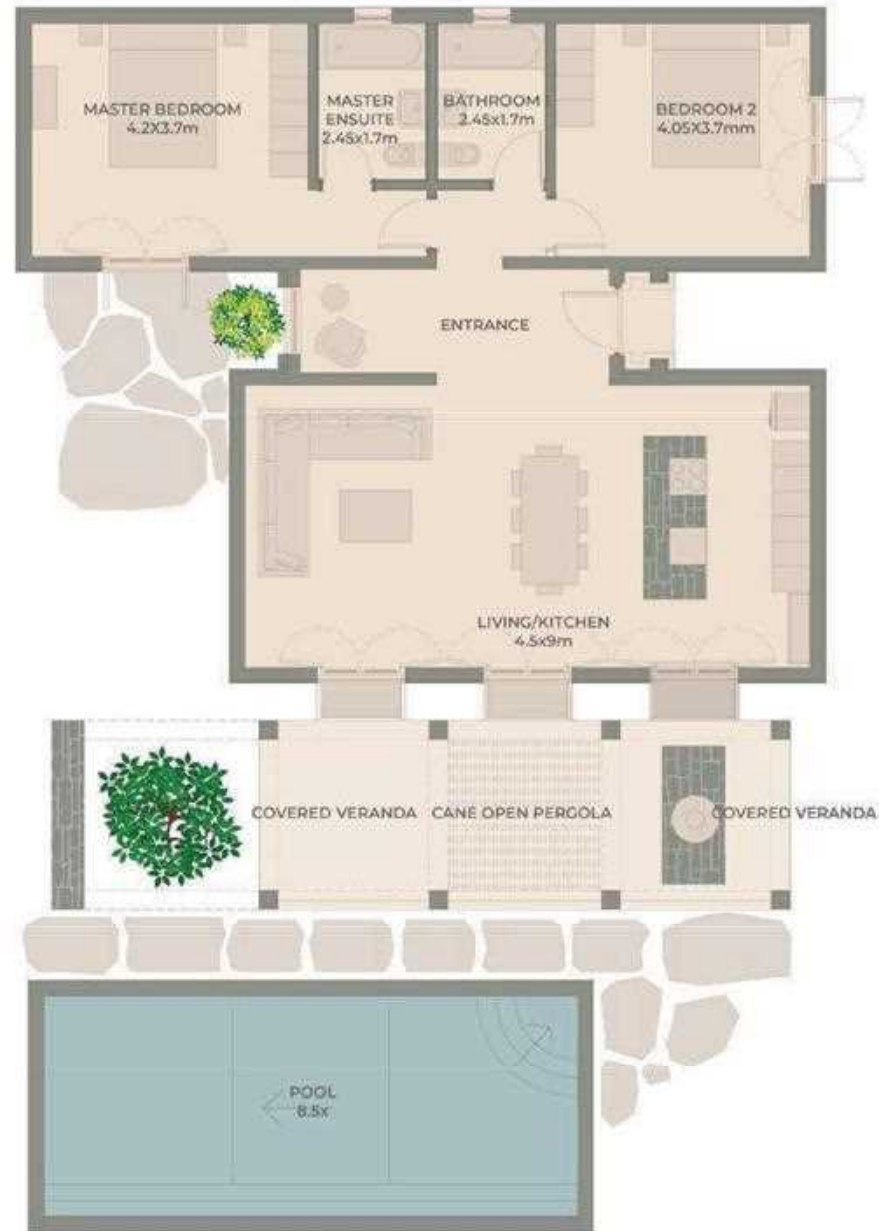


TYPE A

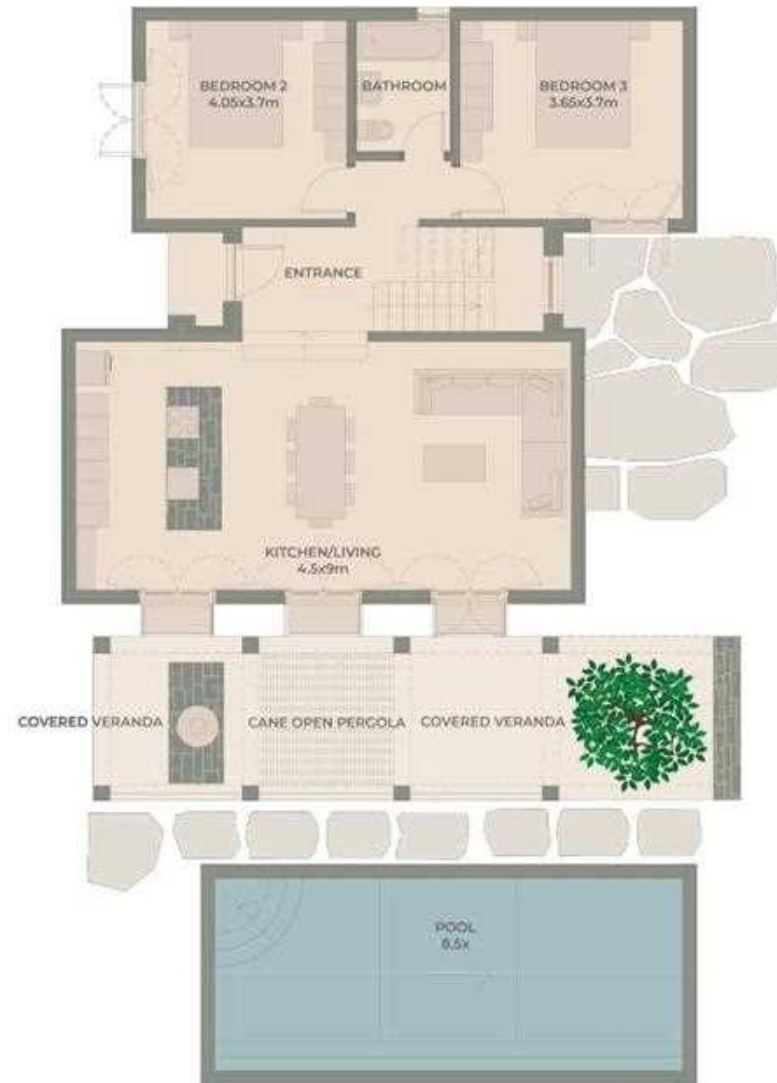
This two bedroom villa is situated over one level offering a sequential open plan area where all spaces seamlessly transition from one to another. As you enter directly into the heart of the house, the sleep and living volumes are on either side, separating the areas into designated spaces.



TYPE B

This villa is characterized by a private and spacious master bedroom suite on an upper floor with two private verandas. On the ground floor there are two further bedrooms separated from the living volumes via a welcoming entrance.

The open plan kitchen and interior living space naturally flow to the spacious outdoor veranda which is softly shaded by natural materials and indigenous plants.



TYPE C

From the welcoming entrance, this two bedroom villa connects all areas via a centralised feature tree. The living spaces drift naturally from one to another whilst the separate bedroom wing is a private haven for relaxation.



TYPE D

This two story villa embraces a more traditional Cypriot layout with the main bedroom suite on the ground floor leading to a private covered veranda, perfect for a jacuzzi. Upstairs there are two further bedrooms ideal for guests privacy.

On the ground level the open plan living and dining area opens via three large patio doors to reveal the outdoor living space and pool area.

