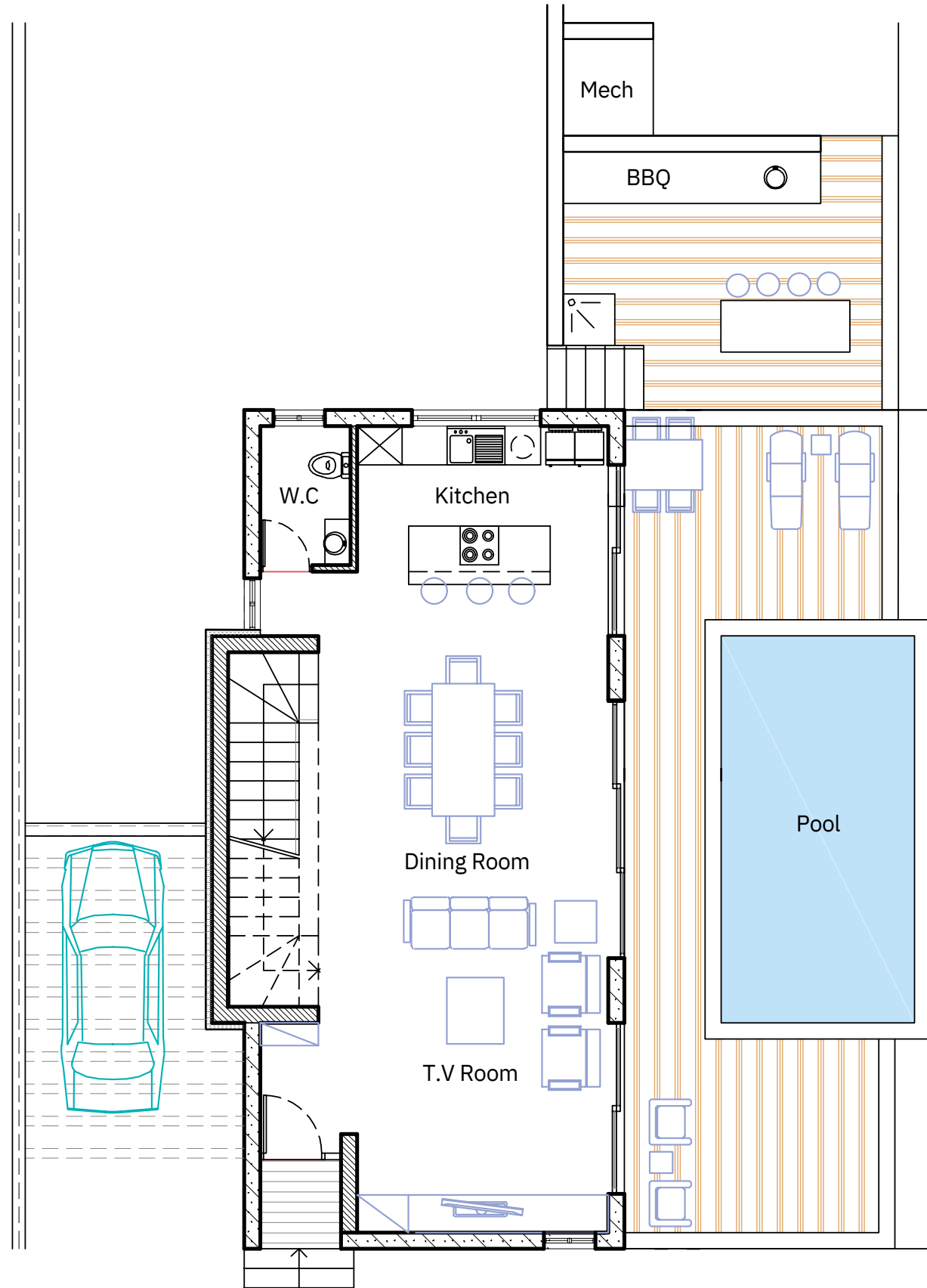


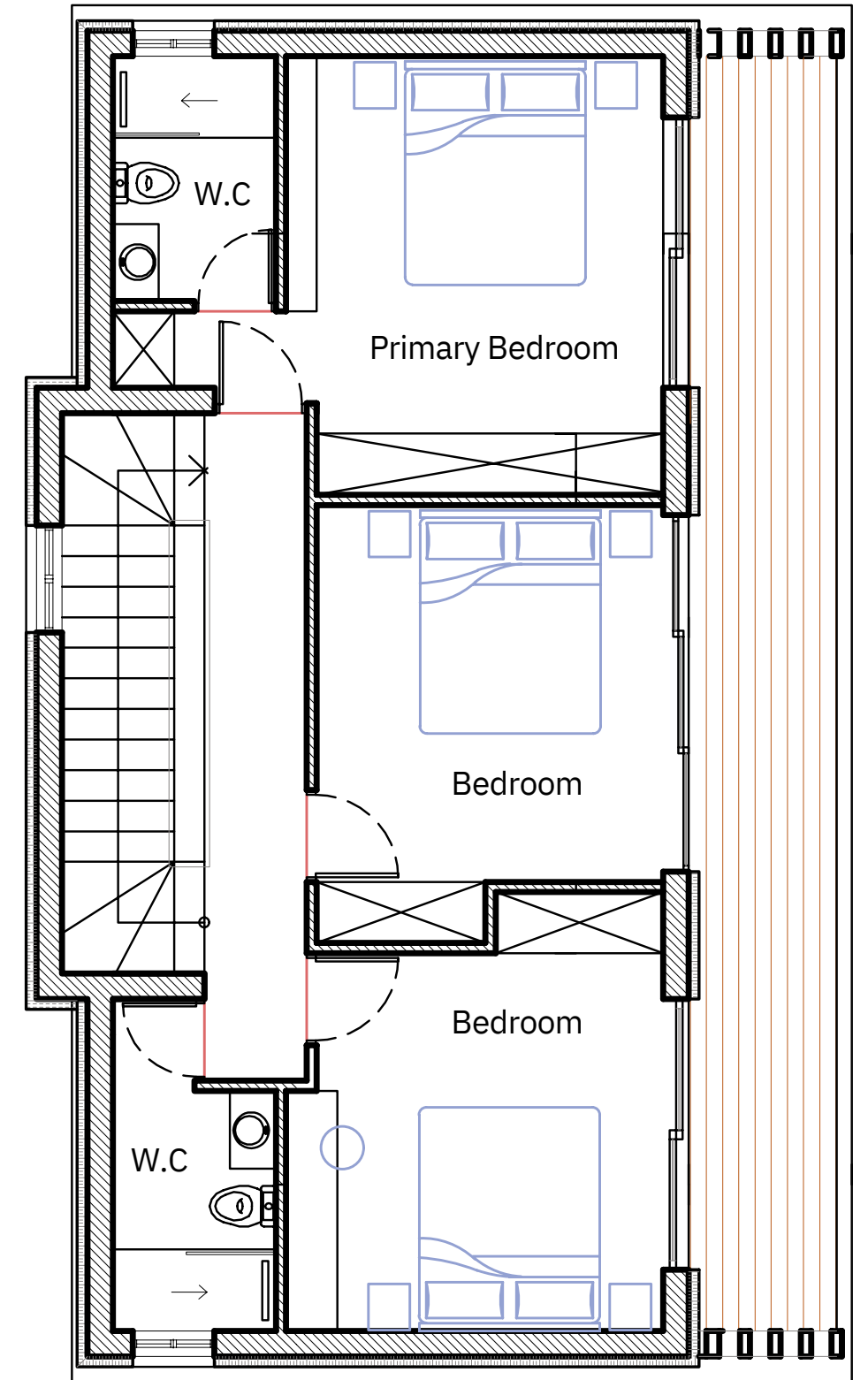
TYPE A

3 Bedroom

Villa 2,3,4,5,6,7 & 8



Ground Floor



First Floor

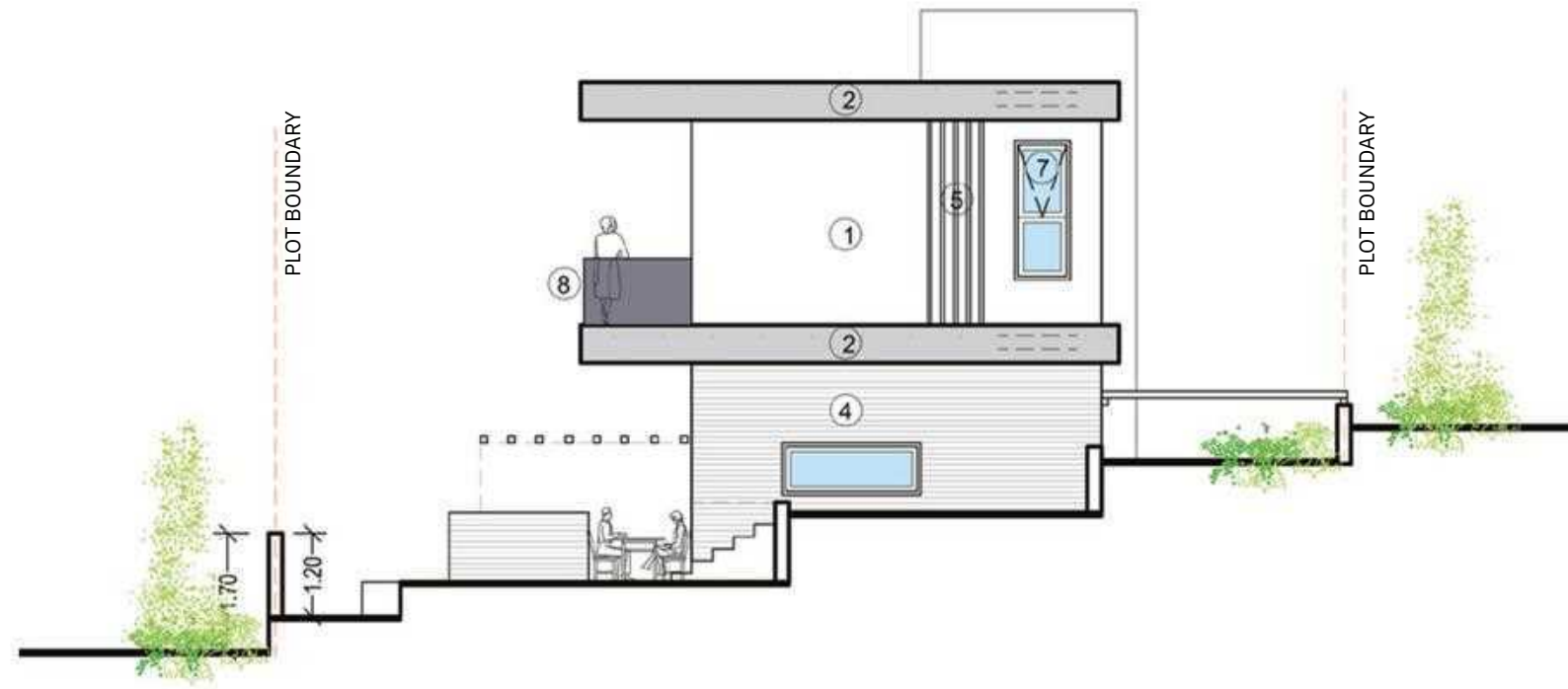
TYPE A

3 Bedroom

Villa 2,3,4,5,6,7 & 8

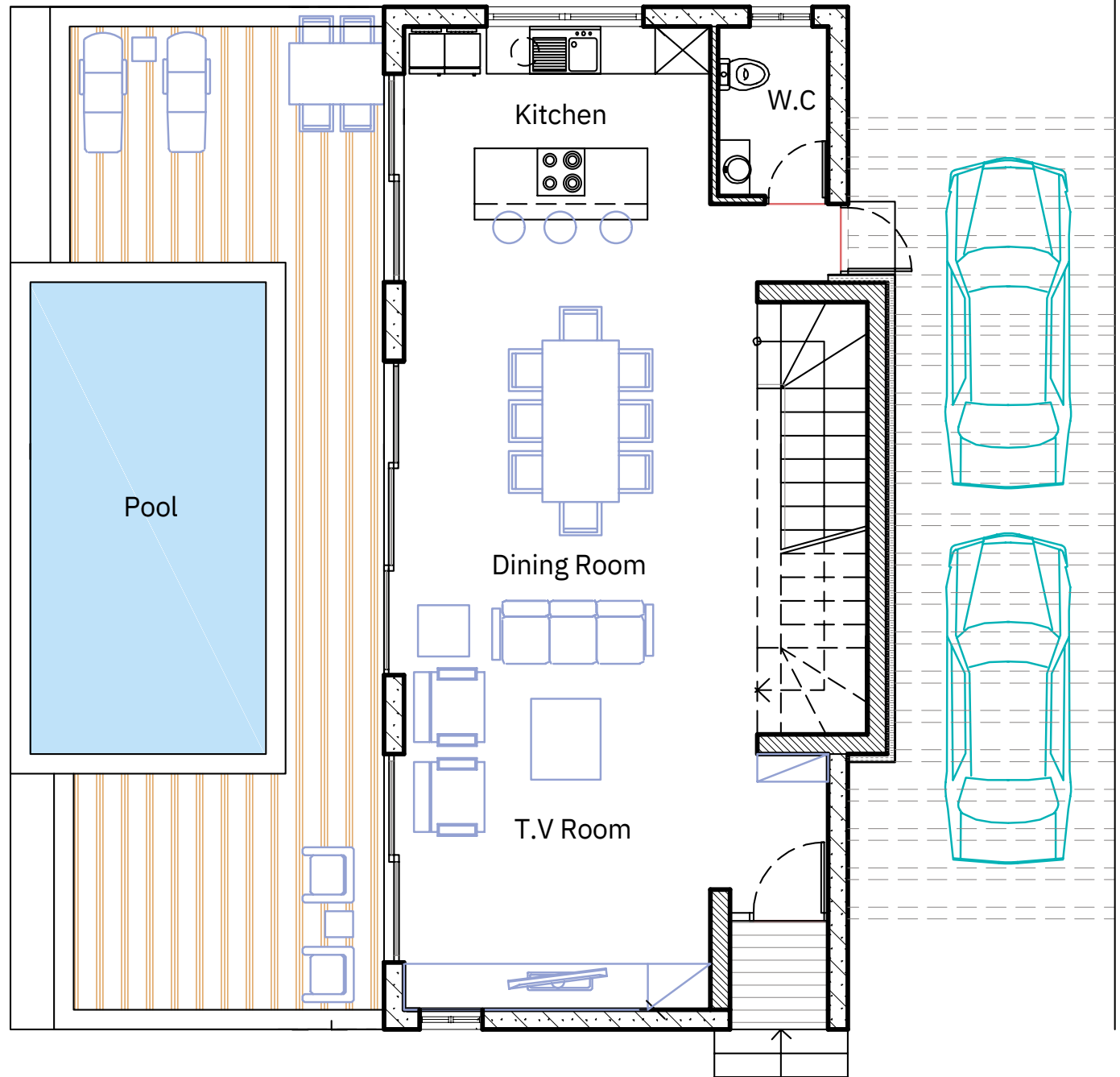
MATERIALS

- | | |
|-------------------------|----------------------------|
| 1 White render | 8 Glass balustrate |
| 2 Grey render | 8a Glass balustrate (with |
| 3 Fair-face concrete | 9 sandplasting) Green wall |
| 4 Board formed concrete | 10 Deck |
| 5 Louvers 5x20 | 11 HPL |
| 6 Aluminium cladding | 12 Timber cladding |
| 7 Aluminium windows | |

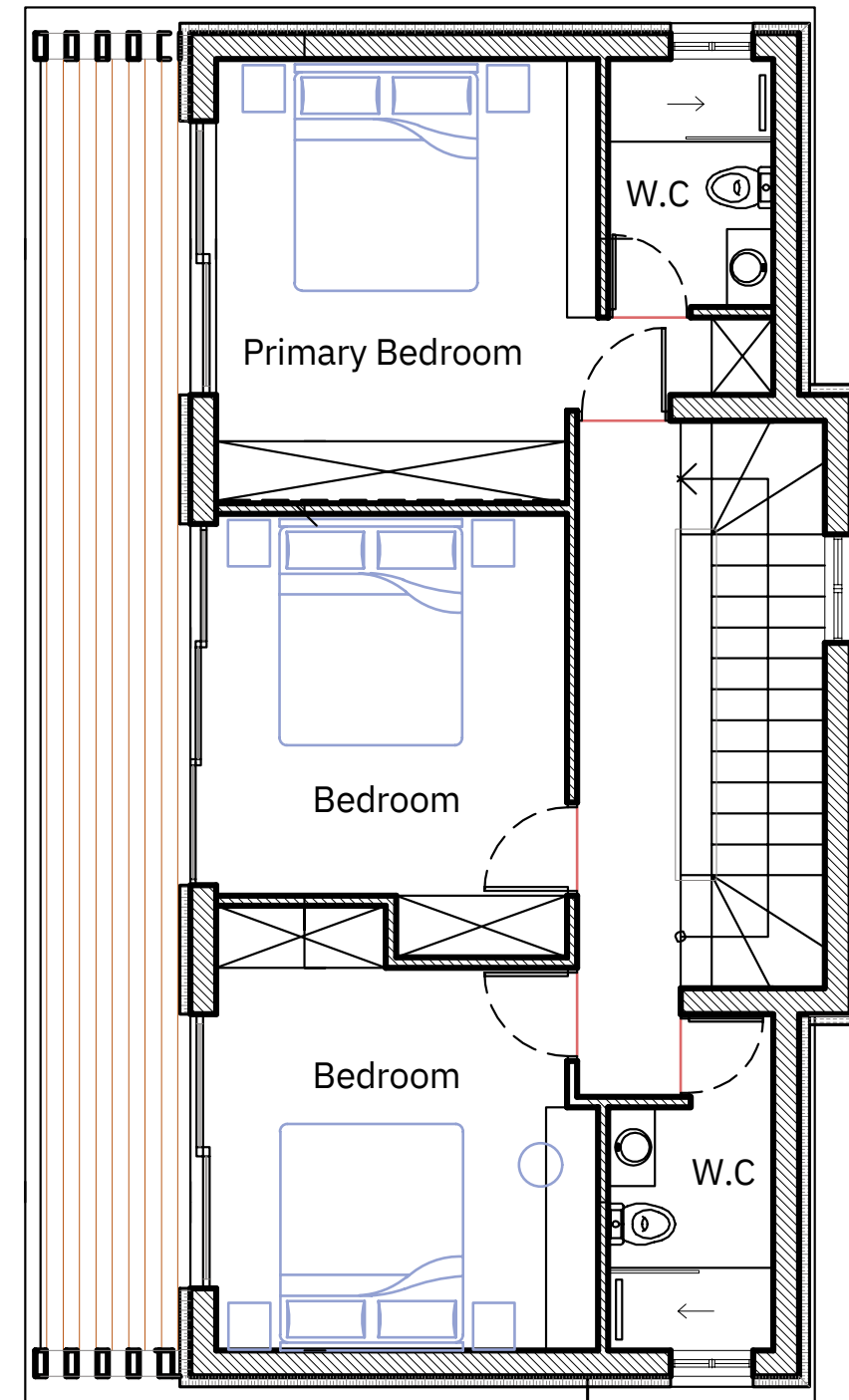


TYPE B

3 Bedroom Villa 1 & 9



Ground Floor



First Floor

TYPE B

3 Bedroom Villa 1 & 9

MATERIALS

- 1 White render
- 2 Grey render
- 3 Fair-face concrete
- 4 Board formed concrete
- 5 Louvers 5x20
- 6 Aluminium cladding
- 7 Aluminium windows
- 8 Glass balustrate
- 8a Glass balustrate (with sandplasting)
- 9 Green wall
- 10 Deck
- 11 HPL
- 12 Timber cladding

